

Geographical Open Data, Semantics and Smart Cities

Massimo Zotti  @massimozotti



pkm026-595-1.0



Planetek Group



Roma



Bari



Athens



Key Numbers

Planetek Group

SME



year **1994**



people **55**



M€/y **5**



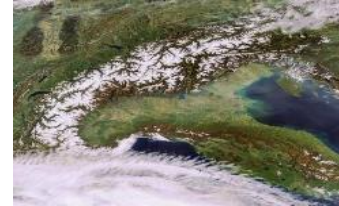
Key Technologies

Remote sensing

Spatial Data Infrastructure

Location Based Systems

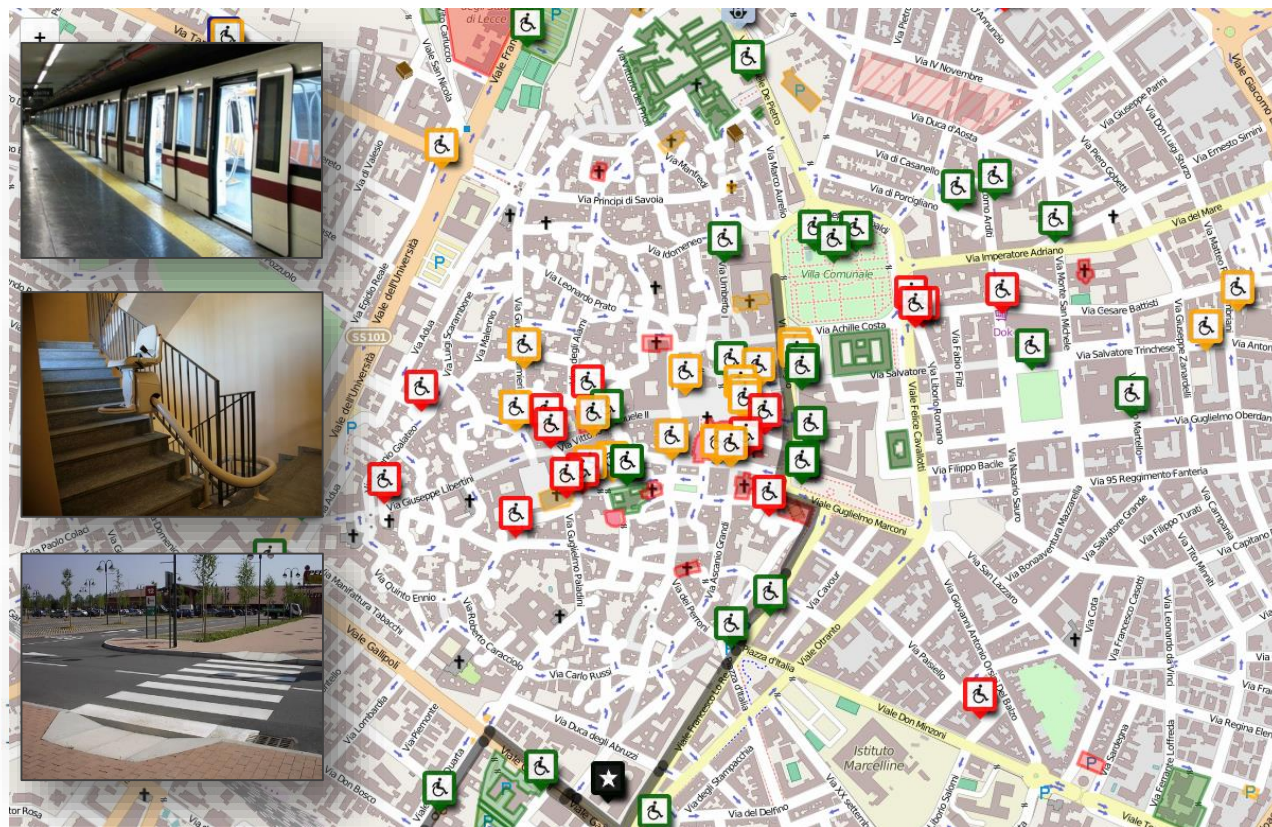
Space Software



Geographical Open Data, Semantics and Smart Cities



Mash-up or spatial analysis?



Visualizza dati × Close

Luoghi accessibili per disabilità varie e di interesse

Mapa costruita durante l'Hackaton sulla disabilità del 9.11.2014 organizzato da Movidabilia e Comune di Lecce e realizzata da Francesco Piero Paolicelli, Federico Cortese, Salvatore Maletesta.

- Accessibili** Luoghi accessibili da carrozzelle (ogni stanza, ingresso e presenza bagni disabili) wheelchair=yes
- Accesso limitato** Accesso limitato con le carrozzine wheelchair=limited
- Luoghi con tabelle visivo-tattili** information=braille
- Non Accessibili** non accessibili da carrozzelle wheelchair=no
- Percorsi tattili per non vedenti** tactile_paving=yes
- Ristoranti per Celiaci** diet:gluten_free = yes
- Sedi ENS**
- Semafori con segnalatori acustici** traffic_signals:sound=yes

Ringraziamenti

Linked geospatial data

Where are we today?



GetLOD

Spatial Data Infrastructures → RDF

Linked geospatial data

Where are we today?



GetLOD

Spatial Data Infrastructures → RDF



Ontologies for INSPIRE data themes
common ontologies and geographical data standardization

Linked geospatial data

Where are we today?



GetLOD

Spatial Data Infrastructures → RDF



Ontologies for INSPIRE data themes
common ontologies and geographical data standardization



Crowdmapping
openstreetmap and neogeography



Resources:

- GetLOD: www.planetek.it/eng/products/all_products/getlod
- INSPIRE and Ontologies: http://www.je-lks.org/ojs/index.php/Je-LKS_EN/article/view/914
- Openstreetmap: www.openstreetmap.org

Where do we go now?

- SDI for Smart Cities enabling data interlinking
need for semantics in opengeodata
- SDI for spatially enabled Citizens
citizens re-use and produce geospatial information

Where do we go now?

- SDI for Smart Cities enabling data interlinking
need for semantics in opengeodata
 - SDI for spatially enabled Citizens
citizens re-use and produce geospatial information
- **geospatial indicators and metrics
for the governance of the smart city**



Thank you!

For further information:

Massimo Zotti, Head of Government & Security SBU

zotti@planetek.it  [@massimozotti](https://twitter.com/massimozotti)

Via Massaua 12, 70132 Bari, ITALY

Tel: +39 080 96 44 200

www.planetek.it

